

# worknc

## Dental

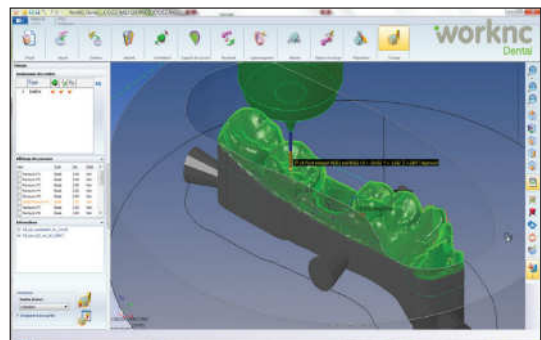
### WorkNC Dental V4.0 - New Features and Improvements

WorkNC Dental V4.0 is a major release of WorkNC Dental which integrates the latest version of WorkNC V22 offering a wide range of innovative automatic machining functions for dental prostheses whatever the process.

#### Integration of new WorkNC V22 calculation algorithms

WorkNC Dental V4.0 integrates the latest version of WorkNC V22 which offers a wide range of innovative functions ensuring increasingly efficient and reliable toolpaths.

WorkNC V22 features new finishing toolpaths along with improved existing toolpaths. For example, the addition of new morphing strategies and spiral transitions to obtain finishing toolpaths where the cutter is permanently in contact with surfaces to ensure perfect surface finish while reducing machining times to improve productivity.

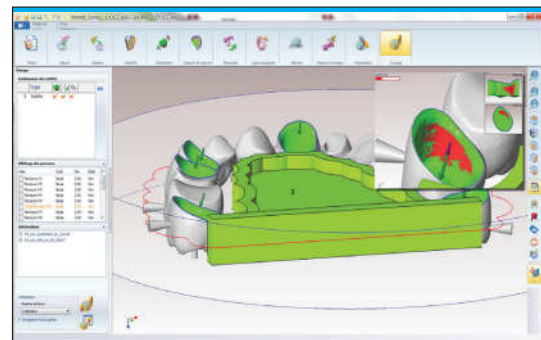


New WorkNC V22 finishing toolpaths

#### Automatic positioned 3+2 / 5 axis, Automatic undercut machining

WorkNC Dental V4.0 integrates new automatic cavity recognition algorithms and ensures faultless detection of concurrent or diverging insertion axes offering fully automatic machining on 3+2 or 5 axis positioned machines. This new functionality can provide optimal use of 3+2 machines which do not have simultaneous 5-axis features.

Preparation times are significantly reduced as interactive management of undercut remachining routines is no longer a necessity. In addition, this new functionality offers a direct display of differently orientated axes.



Automatic 3+2 cavity undercut machining

#### Advanced management of machine kinematics

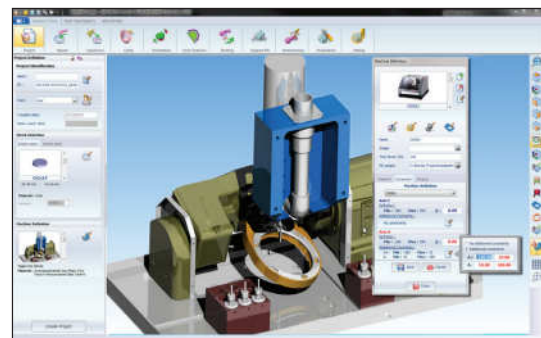
WorkNC Dental V4.0 takes another step forward in the realms of automatic machining process management by taking into account, before calculations are run, of machine characteristics and kinematics.

In this way, jobs are managed in real time during the project preparation phase and users are immediately aware of feasibility issues.

Follows us on

Twitter/sescoi 

[www.facebook.com/dentalcadcam](http://www.facebook.com/dentalcadcam) 

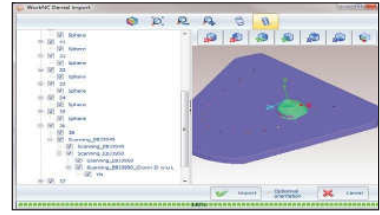


Advanced management of machine kinematics and collisions

## Native dental CAD file importation

WorkNC Dental V4.0 includes converters for all common native dental CAD files. This new functionality allows WorkNC Dental to directly import Cerec®, Procera®, 3Shape® and Cercon® files. WorkNC Dental can also import IGES files.

An integrated graphic interface allows direct selection of elements to assemble and convert.

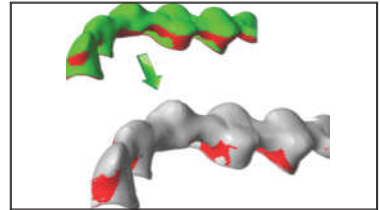


Interactive selection of imported elements from native files

## New precise 3D display of undercuts

WorkNC Dental V4.0 offers a real and precise display of existing undercut areas on elements to be machined by also taking into account zones which are inaccessible for machining.

This new functionality is particularly interesting and well adapted for analyzing complex cavities.



Exact 3D rendering of undercuts

## Dynamic element offset extensions

WorkNC Dental V4.0 allows users to freely define machining extremity curves giving improved accessibility for machining strategic areas of complex prostheses.

When using the 5-axis simultaneous remachining toolpath on undercuts, this function allows - depending on machine kinematics - remachining angulation to be increased in order to provide improved toolpath performance.



Dynamic management of offset extensions

## New WorkNC Dental Implant Module Features

Numerous improvements have been made to the WorkNC Dental implant module; in addition to the library featuring generic connectors which are compatible with the leading brands of implants, we can also mention interactive 3D repositioning of prosthesis connectors.

Manual detection algorithms have also been optimized to ensure improved recognition and reconstruction of STL models.

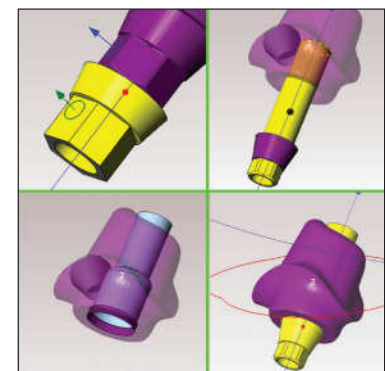


New implant library

## Numerous features and improvements...

WorkNC Dental V4.0 integrates a wide range of new features and improvements to simplify and automate use of the application :

- Improved sintering supports for large bridges,
- Machining axis display of the machine,
- Multiple prosthesis offset extensions,
- Communications plug-in for automatic ISO file processing on the machine controller,
- Automatic generation of job related technical documentation,
- Automatic support pin addition and interactive insertion in one click,
- Mouse configuration compatibility with all major dental CAD systems.



New 3D repositioning functions

**SESCOI INTERNATIONAL SAS**  
 50 Boulevard du Général de Gaulle  
 71009 Macon Cedex - FRANCE  
 Tel. (+33) (0)385216621  
 Fax (+33) (0)385216622  
[www.workncdental.com](http://www.workncdental.com)

**vero**  
 Software